

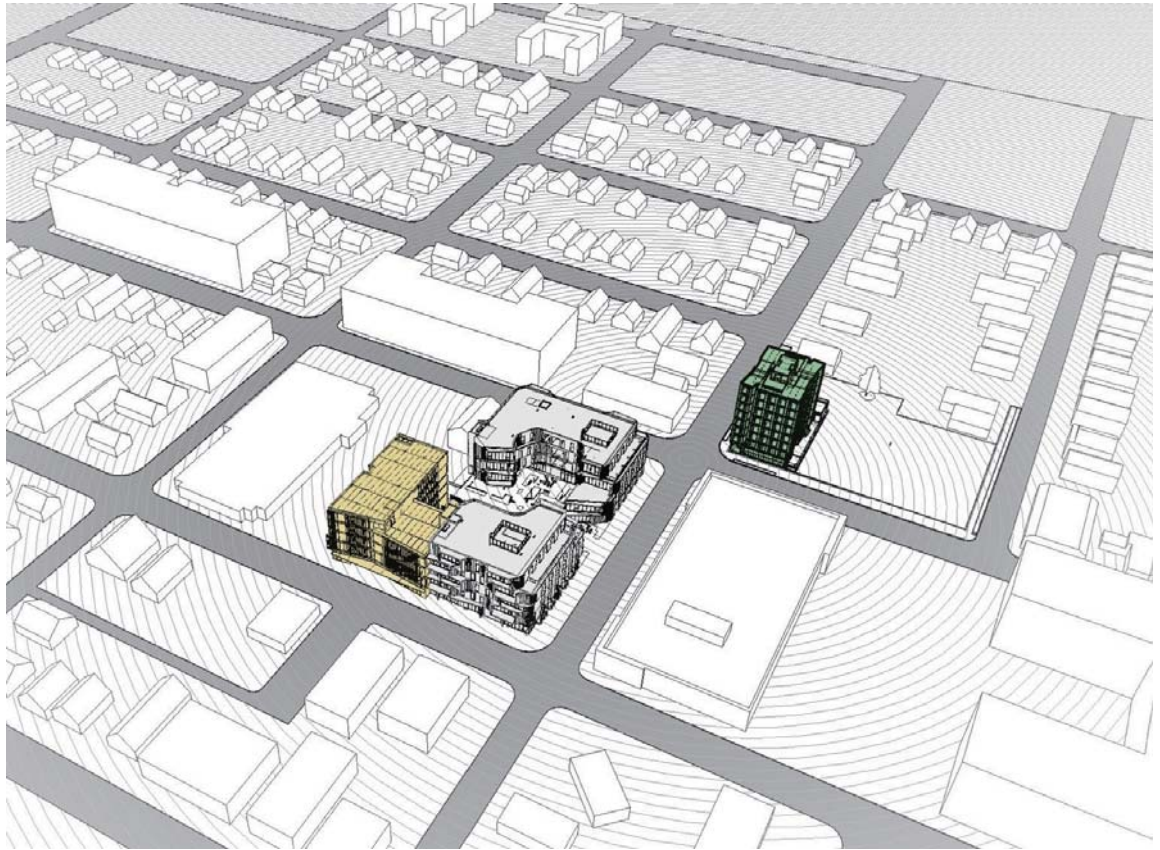
Timber Develop Design Build

Team

Developer:
Kaiser Group, Inc.
Portland, OR

Architect:
PATH Architecture, Inc.
Portland, OR

General Contractor:
Kaiser Group, Inc.
Portland, OR



The Radiator

Office Building
Ground floor retail

5 Stories
65 ft (20 m) tall
36,000 sf (3,350 m²) area

Timber from the ground up





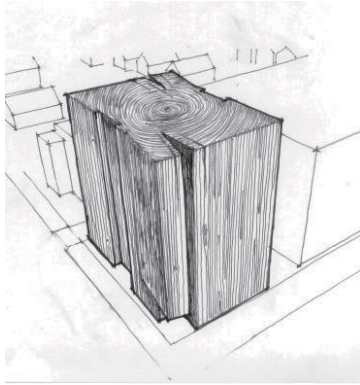


Carbon12

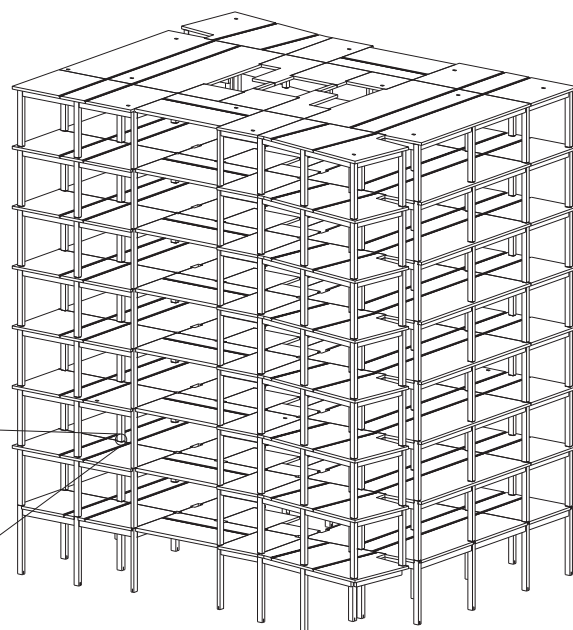
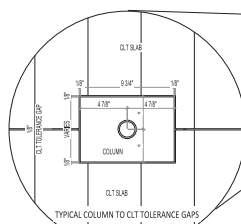
Residential Building
Ground floor retail

8 Stories + Rooftop Deck
95 ft (29 m) tall
38,000 sf (3,530 m²) area

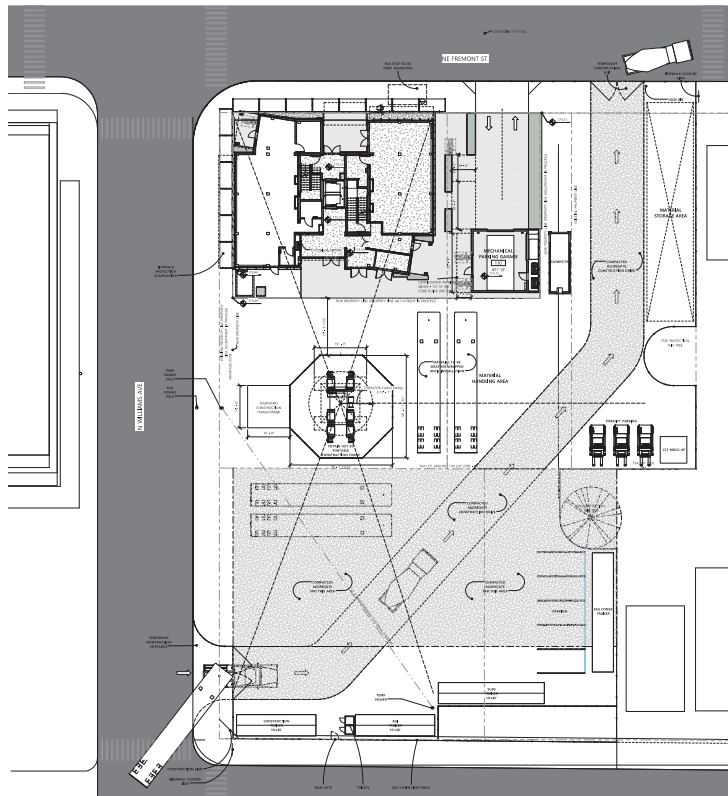
Timber from the first floor up
Concrete Basement





[illegible]













Canyons

Residential Building
Ground floor retail

6 Stories + Rooftop Deck
65 ft (20 m) tall
110,000 sf (10,220 m²) area

Barrier free living for an aging
population





Spar

What is next for CLT in Portland?

